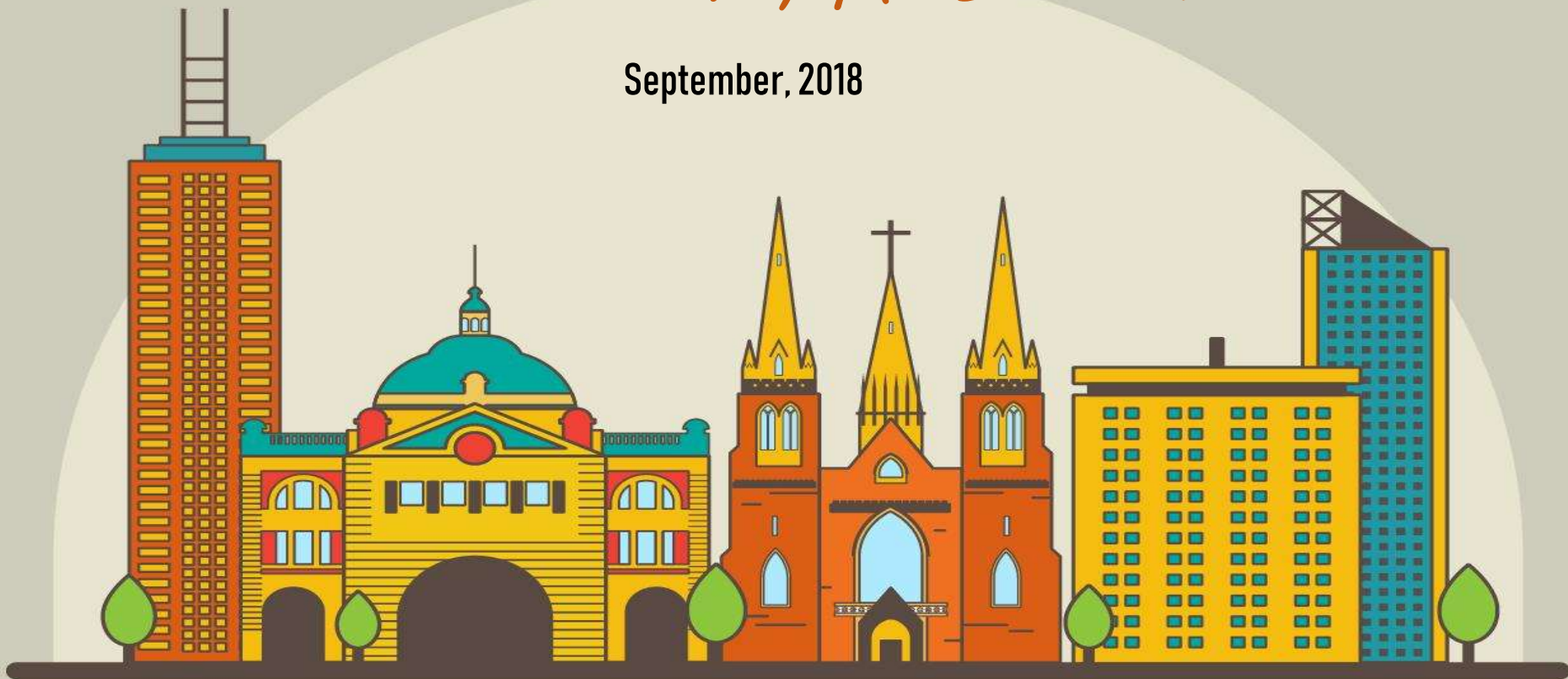


# Melbourne, Australia

September, 2018



<https://www.vecteezy.com/vector-art/164183-free-melbourne-landmark-illustration>

# Royal Melbourne Hospital



2. Subacute/ Extended care campus

1. Main campus

# Royal Melbourne Hospital

## Royal park campus

### **PMR-related Outpatient clinics**

- Incontinence clinic
- Amputee clinic
- Artificial limb clinic
- Neuro clinic
- Spina bifida clinic
- Transitioning from children's healthcare services
- Spastic clinic
- Fall and balance clinic

### **Inpatient clinics**

- Rehabilitation unit (40 beds)
- Aged care unit
- Transition care program



# My Program

- 1<sup>st</sup> week: Inpatient ward
- 2<sup>nd</sup> week: Taking referrals from the main campus
- 3<sup>rd</sup> week: Home visit
- 4<sup>th</sup> week: Outpatient clinic

## 1<sup>st</sup> week : Inpatient ward

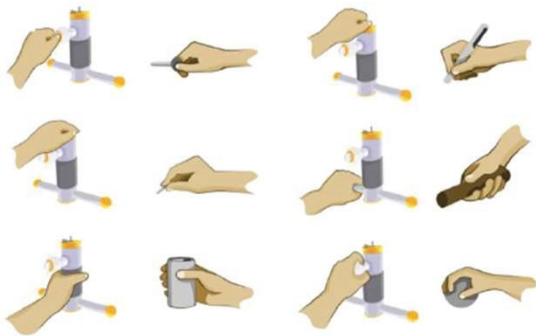
- Shadow ward round
- Attend Multidisciplinary team care round
- Visit PT, OT and prosthetic/ orthotic gym

# 1<sup>st</sup> week: Inpatient ward

- Hand hub
- Activity Arcade (Environmental Enrichment)



SaeboReJoyce Manipulandum for Dexterity Training



With the *SaeboReJoyce* Manipulandum, patients can practice computerized task-oriented activities targeting specific limited prehension patterns.



[http://www.teamtherapeutix.ca/our\\_services/health-wellness/armeo-functional-rehabilitation/](http://www.teamtherapeutix.ca/our_services/health-wellness/armeo-functional-rehabilitation/)  
<https://www.saebo.com/saebo-rejoyce/>

## 2<sup>nd</sup> week: Main campus (taking referrals)

- Take consultation from other specialties and decide where patients should go....
  - Rehabilitation unit (this hospitals/ near their home)
  - Aged care unit
  - Acute brain injury unit in other hospitals
  - Nursing care
- Team conference
- Attend ward round- neuro, trauma, ...

## 3<sup>rd</sup> week : Home visit

- Home program duration 2 weeks

### **Team** (each session 45-60 minutes)

- Physiatrist
- PT
- OT
- Nurse





## 4<sup>th</sup> week : Outpatient clinic

- Neuro (stroke mostly) clinic
- Spina bifida clinic
- Transitioning from children's healthcare services
- Amputee clinic



<http://www.clker.com/clipart-cute-penguin-with-hat.html>

What are *the differences* btw there and here??

- Role of team members
  - Rehabilitation physician
    - More on medical problems
    - No diagnostic US, electrophysiologic study, or other physical treatments
  - PT, OT, Speech pathologists, Podiatrists, Prosthetists and Orthotists-
    - work independently on their own, not under physician's prescriptions both IPD, consultation and OPD
- Frequent team conference
- Amount of patients

*2<sup>nd</sup> best  
healthcare  
in the world*

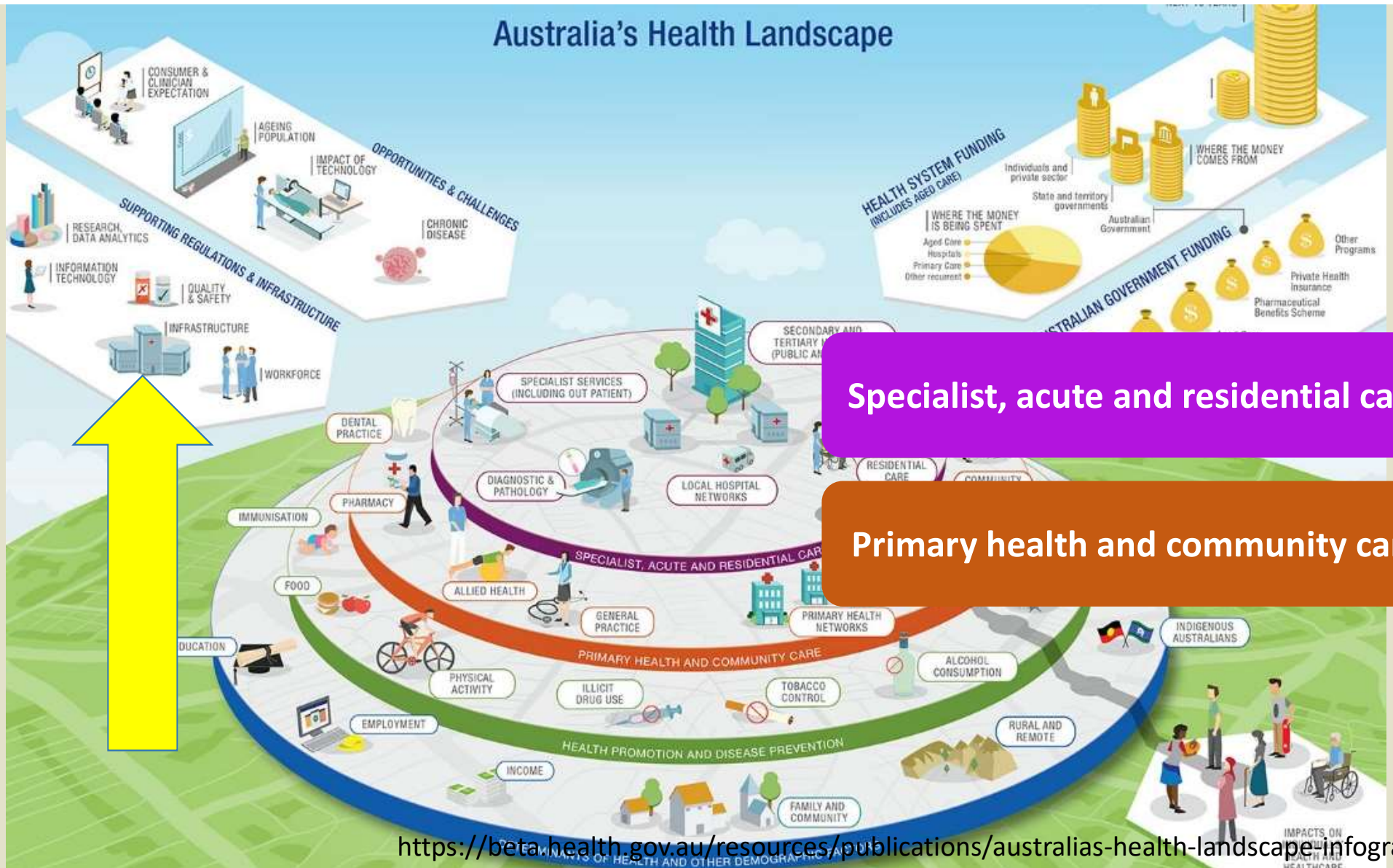
# Australia's Healthcare System

Brief Review



<https://www.kisspng.com/png-koala-bear-clip-art-koala-cliparts-109727/download-png.html>

# Australia's Health Landscape

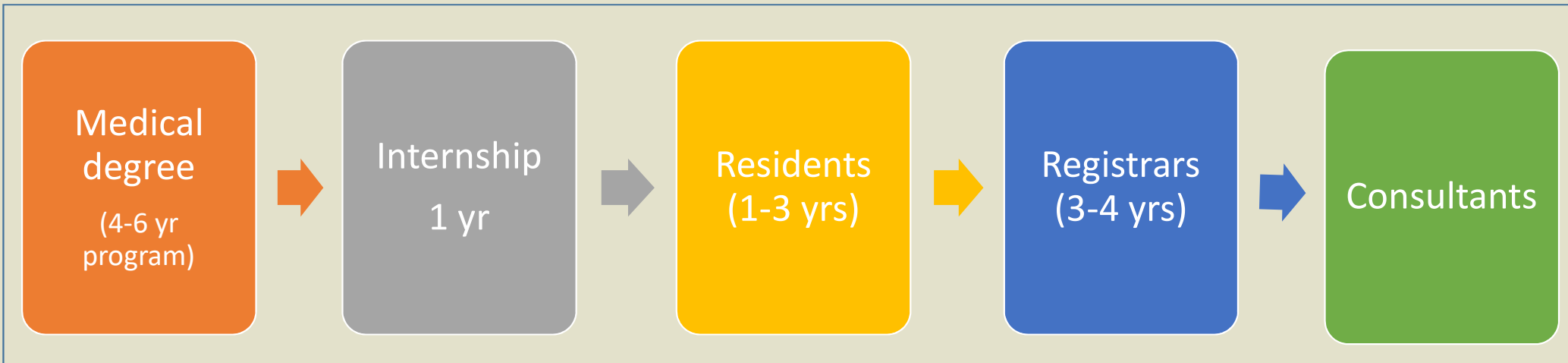


Specialist, acute and residential care

Primary health and community care

# Australia's Healthcare System

- 1<sup>st</sup> visit
  - GPs
  - Emergency department
- Refer to
  - Specialists
  - Hospitals



*When becoming sick,  
In or Out office hours?*



# Reflection

- Differences in healthcare and medical educational system
- Role of rehabilitation team players can be changed in different settings
- At Siriraj hospital
  - More than enough tools and patients to learn from
- Being in new environment is a good chance to know where you are and to see what can be improved both academically and in real life.

Thank You



<https://www.vecteezy.com/vector-art/164183-free-melbourne-landmark-illustration>